

**WIDE-FACE  
NON-WOVEN & BRISTLE  
BRUSHES**

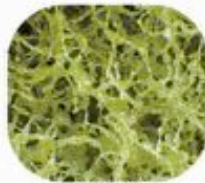
Our experience comes with seven decades of knowledge and experience as a manufacturer and engineer of quality abrasive tools.

Our non-woven brushes are precision made for a consistent surface on your substrate surface.

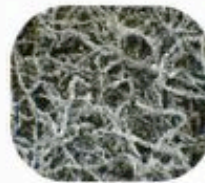
When cleaning and finishing is critical to your process we offer you the broadest selection of materials in the industry.



$Al_2O_3$   
Aluminum oxide



$Al_2O_3$   
Aluminum oxide  
(High performance)

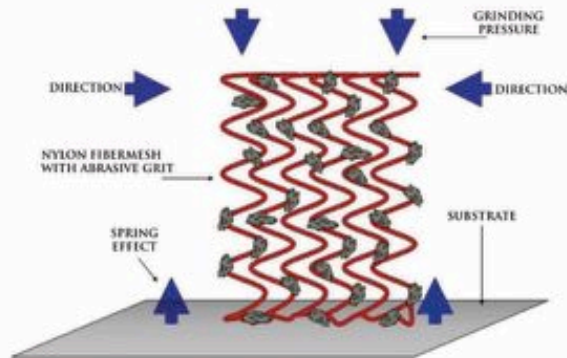
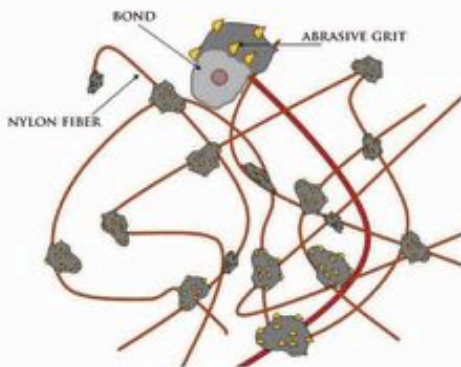


SiC  
Silicon carbide



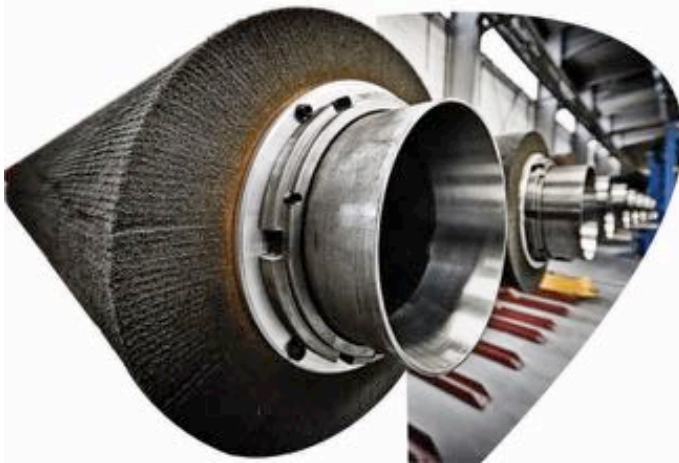
SiC  
Silicon carbide  
(Magnified)

Webbing is selected for the task at hand. Variations in recipes are made to determine how to produce **“Your Surface” on Your Material.**



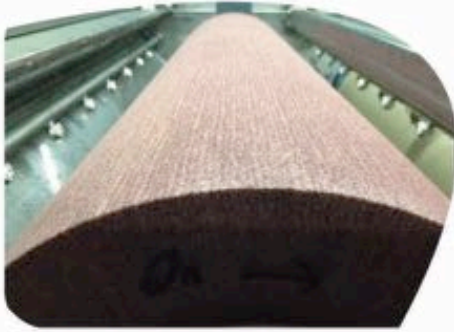
What makes one Non-Woven brush better than another?  
“Better”, usually means:

- LONGER LIFE
- GOOD SELF HEALING SURFACE
- CONSISTENT UNIFORM SURFACE FINISH



Falconbrite has researched and tested non-woven material from quality global sources. Our material is custom made to optimize performance on steel, aluminum, copper, galvanized and electroplated materials.

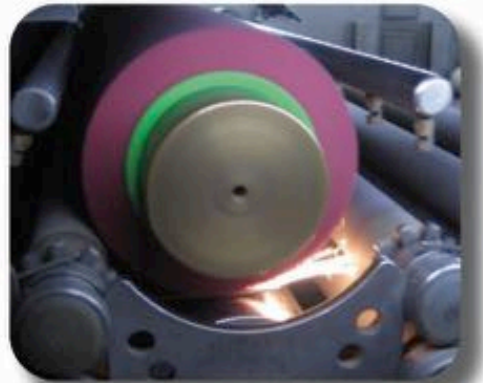
COPPER & BRASS • STEEL • STAINLESS STEEL • ALUMINUM



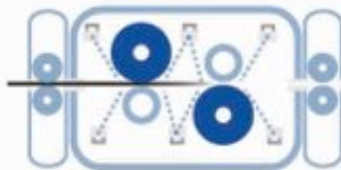
## SURFACE TECHNOLOGY FOR STRIP AND PLATE

DECORATIVE FINISHES • CLEANING • DEBURRING • STRIPPING

## SAMPLE FINISHES ON YOUR MATERIAL



OXIDE REMOVAL • DESCALING • SURFACE ACTIVATION



ATLANTECH PROCESS TECHNOLOGY, INC. ★  
**FPT**  
**FALCONBRITE**



## RESEARCH AND DEVELOPMENT FOR CONTINUOUS IMPROVEMENT

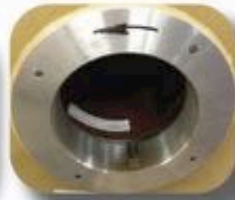
LONG LIFE WEBBING • DYNAMICALLY BALANCED

## LARGEST VARIETY OF FINISHES IN THE INDUSTRY



BRUSHES ARE SERIALIZED, QUALITY DOCUMENTED,  
SHIPPED IN ENGINEERED PACKAGING

# ENGINEERED BRUSH CORES, FLANGES, AND REPLACEMENT SHAFTS FOR YOUR EQUIPMENT



## REPLACEMENT SHAFTS

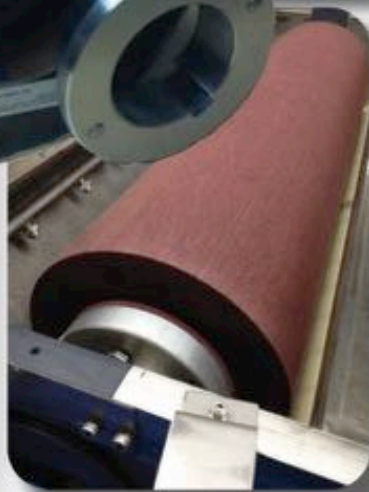
## FLANGES

- ALUMINUM
- STEEL
- STAINLESS STEEL
- DELRIN
- UHMW



## SERVICE

WE PROVIDE BRUSH DRESSING  
AND DYNAMIC BALANCING





Approaches every application with in-depth knowledge and experience of the abrasive process and machine function.



Surveys your current process line and applies your continuous improvement initiatives for the future.



Produce with our mobile test lab, at your facility, results with samples of your material. Our internal labs are available for further testing.



Delivers recommendations to improve your surface quality.





## OUR MISSION

WE STRIVE TO PRODUCE VALUE, NOT AMASS VOLUME, THUS WE ARE STRUCTURED TO MANUFACTURE CAREFULLY ENGINEERED BRUSHES



ONLY THROUGH CONTINUED TESTING AND VARYING THE PARAMETERS CAN WE CREATE NEW FINISHES ON EXISTING EQUIPMENT

## STATE OF THE ART FACILITY

THE MOST ADVANCED EQUIPMENT HAS BEEN CAREFULLY SELECTED AND INSTALLED TO STREAMLINE OUR MANUFACTURING PROCESS. EXPANDING OUR CAPABILITIES, AND EXPEDITING TURNAROUND



Member of  
  
National Coil Coating  
Association



MEMBER  
OF  
  
GALVANIZERS  
ASSOCIATION

CONTACT US AT:  
816-382-9150  
INFO@ATLANTECHPROCESS.COM  
WWW.ATLANTECHPROCESS.COM