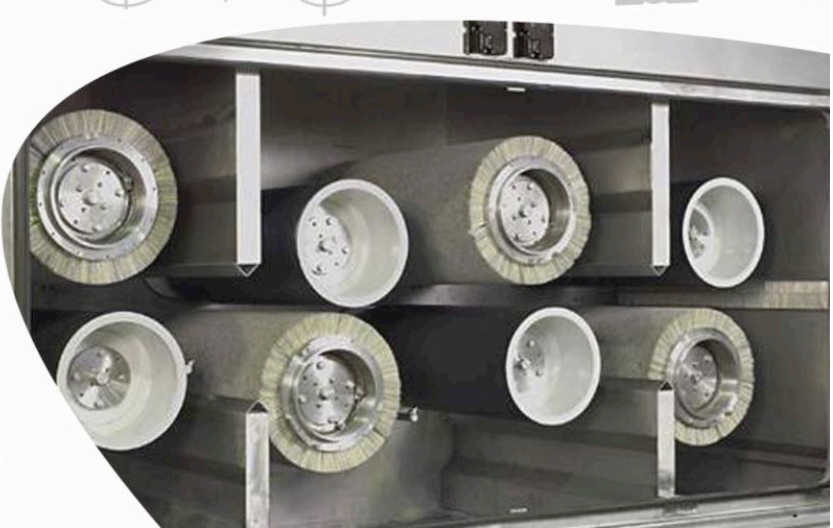


RETHINK BRUSHING



NEXT GENERATION OF
MECHANICAL CLEANING
TECHNOLOGY FOR
COIL & PLATE



We have been building cleaning and finishing machines for well over 60 years.

In doing so, we have looked at many process lines and listened to scrubber issues from maintenance, operations, and quality team members and have taken a fresh approach at what a brush scrubber should do.

We have hired the top engineers in Germany to design out the issues and engineer in the wants and needs of our customers.

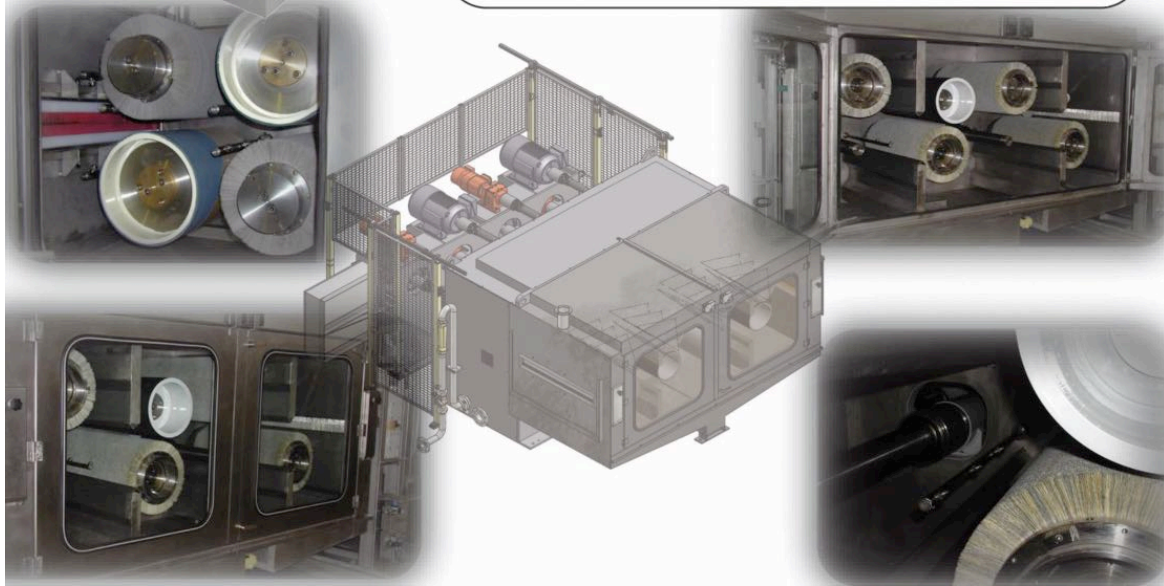


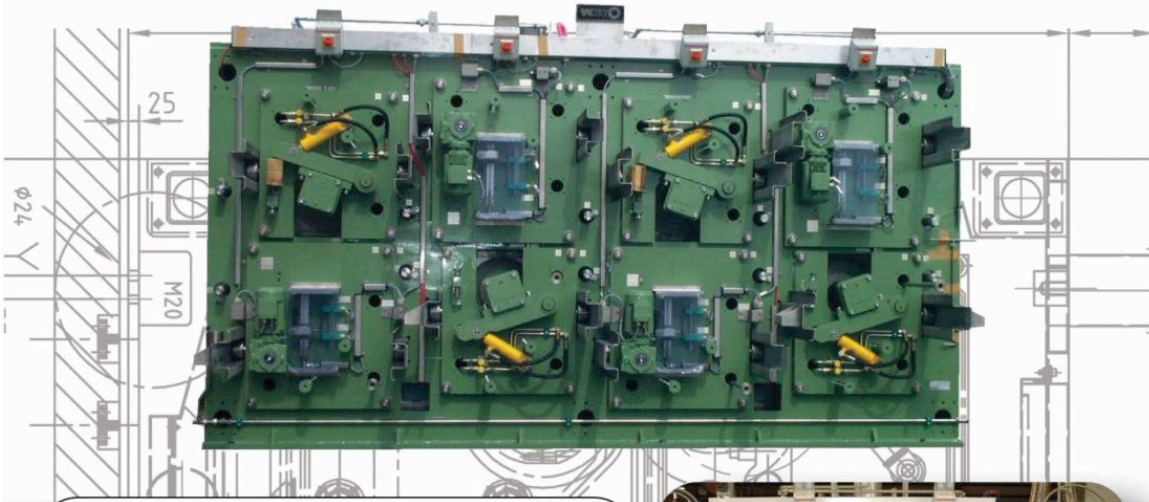
NARROW STRIP MACHINE



CANTILEVER MACHINES

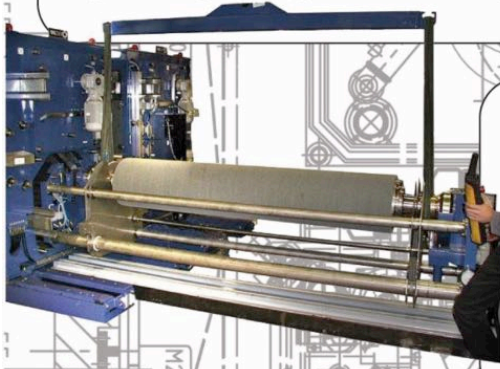
- Brush machines from 2 to 8 heads for narrow strip - up to 30" wide
- The brush process is visible thru internal illumination and large windows
- Quick brush change permits different finishes





BM MACHINES

A new generation of brush machines
Brush Diameters from 12-16 inches,
more contact and longer life
Constant brush dressing to prevent
grooving through different strip widths



BM MACHINES

- Configuration change:
- Brush against brush, brush with or without back up roll
- Brush changes done in 30 minutes
Accurate control of the brush process

BM MACHINES

Exact brush position control and
visualization
Water Spray Monitor
Robust construction and design for
minimum maintenance



PLATE CLEANING OR PART DEBURRING

Abrasive brush machines for cleaning or
deburring and edge rounding
- Degrease, Rinse, Brush, Rinse, Dry



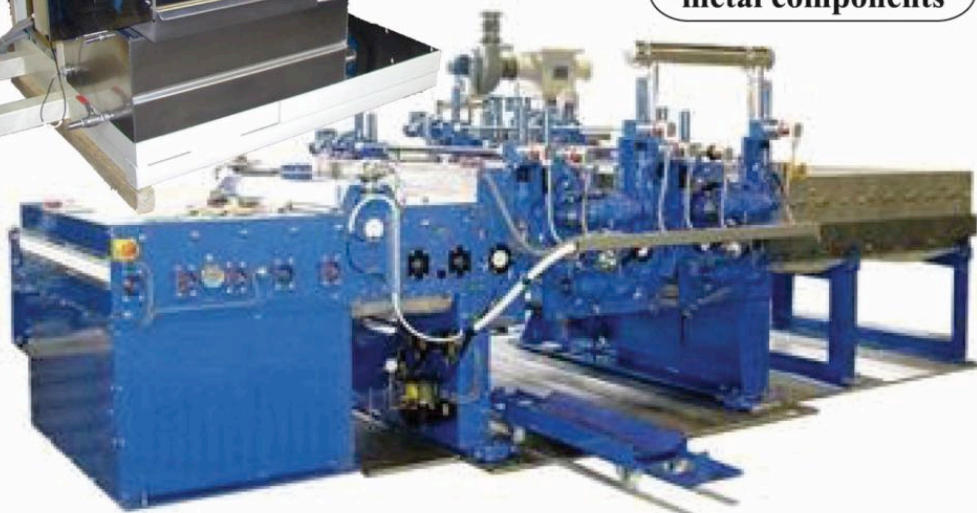
**This brush machine cleans abrasively
stainless steel plates.
This design also produces satin
finishes on CU / AL Sheets.**



**SMALL PARTS
DEBURRING**



**Further Applications
deburring
metal components**



HWHP MACHINES

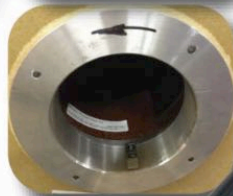
Non-abasive, no contact cleaning & degreasing for aluminum strip



A method to remove rolling oil from metal strip using water at high temperature and pressure.

The system works in recirculation, thus removes the oil, filters and reheats the water.

ENGINEERED BRUSH CORES, FLANGES, AND REPLACEMENT SHAFTS FOR YOUR EQUIPMENT





OUR MISSION

WE STRIVE TO PRODUCE VALUE, NOT AMASS VOLUME,
THUS WE ARE STRUCTURED TO MANUFACTURE
CAREFULLY ENGINEERED MACHINES



NEW, STATE OF THE ART FACILITY

THE MOST ADVANCED EQUIPMENT HAS BEEN
CAREFULLY SELECTED AND INSTALLED TO
STREAMLINE OUR MANUFACTURING PROCESS.
EXPANDING OUR CAPABILITIES, AND
EXPEDITING TURNAROUND



Member of

National Coil Coating
Association



MEMBER
OF

GALVANIZERS
ASSOCIATION

CONTACT US AT:
816-382-9150
INFO@ATLANTECHPROCESS.COM
WWW.ATLANTECHPROCESS.COM